

## INFO SHEET

*Performance Through  
Technology and Service*

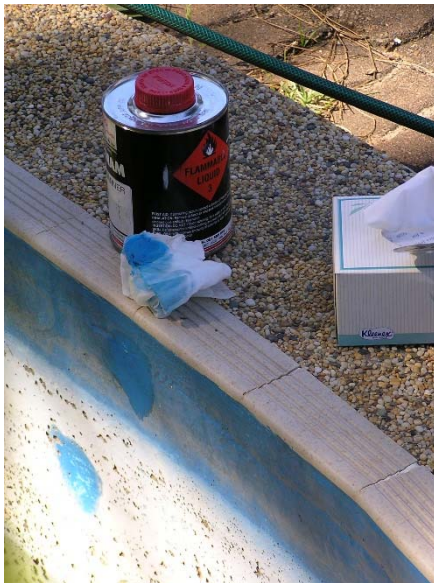
### How To Check For Chlorinated Rubber or Acrylic Pool Paint.

Make sure the existing coating is not Chlorinated Rubber, (check by cleaning a small area with soapy water and dry off. Soak a portion of clean white rag in Xylol / Xylene solvent. (or Supplied Thinners or Acetone based Nail Varnish remover).

Hold the wet solvent rag on an area of about a 50-cent coin, for 20 - 30 seconds. Then slowly rub and remove rag.

If the coating dissolves back to the substrate, with colour saturating the rag and the moist paint forms "sticky" strings if touched repeatedly with the finger, the paint is most likely Chlorinated Rubber.

To check for Acrylic paint, follow same process but use Methylated (Meths) Spirits. It will soften acrylic paint.



#### Note:

The tested 2 areas on the pool surfaces, and the paint on the tissue. This indicates that the paint on the pool is chlorinated rubber. You should end up with a very distinctive coloration on the tissue.

If you don't see any (very little on the first test) repeat test with meths, to see if a result like in the image.

If no such result, then paint is generally expected to be epoxy (or another 2 pack) .

This can also be done with pool full of water, but you will need to be quick so as to see the result and not put too much solvent into the pool water.

Paints that are not dissolved by Xylol (Thinners/Acetone) and/ or Meths (Methylated Spirits) may be over coated, after correct surface preparation. See current Application Notes for full details.

Others (or not sure), call us.